

DinoCapture

User's Manual



www.dutechscientific.com

Dino-Lite[®]
Digital Microscope

Content

Chapter 1 - Getting Started	4
1.1 Installation Instructions	4
1.2 Important Note for Windows Vista Users	9
Chapter 2 - Using File Functions	10
2.1 Open	10
2.2 Save As.....	10
2.3 Copy.....	10
2.4 Share	10
2.5 Mail	11
2.6 Set Magnification.....	11
2.7 Delete Select.....	12
2.8 Delete All.....	12
2.9 Exit.....	12
Chapter 3 - Dino-Lite Settings	13
3.1 Microtouch.....	13
3.2 Run DinoCapture with Microtouch	14
3.3 Audio Setting	14
3.4 Real -Time Image Setting.....	14
3.5 Resolution	15
3.6 DinoCapture Auto Update	15
3.7 Sound Effect.....	16
3.8 Cross Line	16
3.9 Annotations	17
3.10 Coordinates	17
3.11 Magnification	18
3.12 Date & Time	18
3.12 Date & Time	19
3.13 Skin Setting	19
Chapter 4 - Capturing Still Images.....	20
4.1 Taking Pictures.....	20
Chapter 5 - Capturing Video	22

DinoCapture User's Manual

5.2 Capturing Time Lapsed Video	23
Chapter 6 - Measurement Functions	24
6.1 Steps for Using Measurement Functions	24
6.2 Angle Measurement	26
6.3 Line Measurement.....	26
6.4 Continuous Line Measurement.....	27
6.5 Radius Circle Measurement	27
6.6 Diameter Circle Measurement	28
6.7 Three Point Circle Measurement	28
Chapter 7 - DinoCapture Calibration	29
7.1 How to Use the Calibration Fun.....	29
Chapter 8 - Help Options.....	33
8.1 DinoCapture Update.....	33
8.2 About DinoCapture.....	33

Chapter 1 - Getting Started

1.1 Installation Instructions

Step 1: Turn on your PC and place the installation CD into the CD-ROM drive.

Warning! DO NOT connect the Dino-Lite Digital Microscope USB cable to the PC before driver installation.

Step 2: The installation program will run automatically once the installation CD is placed into the CD-ROM. This screen will appear. Press "Continue."

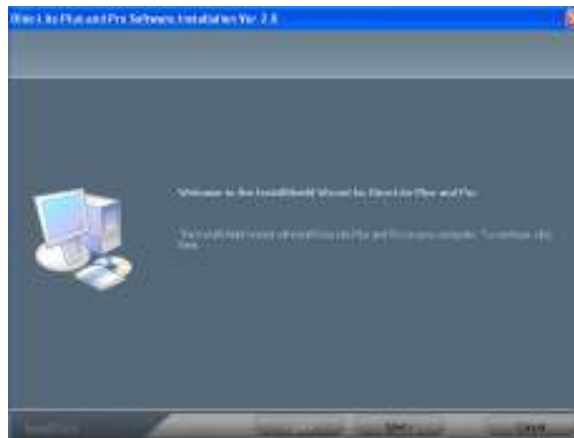


Step 3: The following screen will appear. Select "Driver Installation."



DinoCapture User's Manual

Step 4: The Installation Wizard will come up. Click “Next” on the bottom of this screen.



Step 5: The License Agreement will come up. Please read the License Agreement carefully. To install the Dino-Lite Plus and Pro you must accept the agreement. After reading the License Agreement, click “Yes” to accept.



Step 6: When the “Choose Destination Location” screen comes up, select “Browse” to choose your own destination folder for program installation. Click “Next” to continue.



Step 7: When the “Ready to Install the Program” page comes up, click “Install” to continue.



Step 8: When the “Software Installation” warning message appears, click “Continue Anyway.”



Step 9: This screen will appear to notify you that installation has been successfully completed. Click “Finish” to continue.



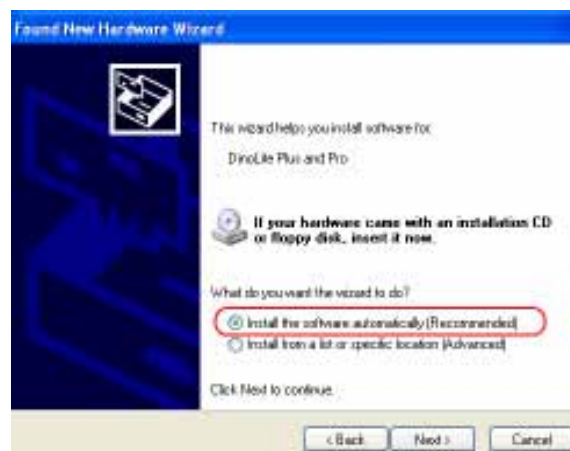
Step 10: You will be brought back to this screen. Choose “Exit,” and plug-in the Dino-Lite Digital Microscope USB cable.



Step 11: Once you have connected the microscope to your computer via the USB connector, the “Found New Hardware Wizard” window will appear. Select “No, not this time” and click “Next” to continue.



Step 12: When the “Found New Hardware Wizard” brings you to this page, we recommend that you select the option “Install the software automatically” and click “Next” to continue.



Step 13: When the “Hardware Installation” warning message appears, click “Continue Anyway.”



Step 14: When the “Found New Hardware Wizard” has completed the installation, click “Finish.” After the window closes, check on your desktop for the Dino-Lite icon. If you cannot find it there, go to “Start” → “All Programs” → “Dino-Lite Digital Microscope.”



NOTE: Before you attempt to initialize the Dino-Lite Digital Microscope, make sure it is connected to the USB port of your computer. If you have more than one USB port, depending on your computer, it may prompt you to install the hardware again on different USB port. To avoid this, try connecting the microscope to the same USB port you originally installed it through. The screen below will appear if the Dino-Lite Digital Microscope is not yet installed completely when opening the DinoCapture.

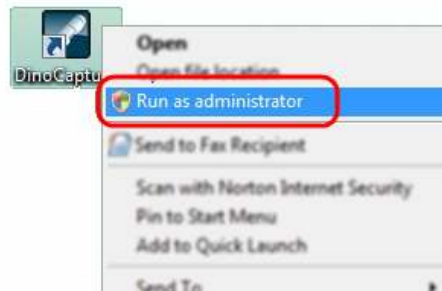


NOTE: We suggest you close DinoCapture before disconnecting the Dino-Lite Digital Microscope from your computer.

1.2 Important Note for Windows Vista Users

When attempting to run the DinoCapture with Windows Vista for the first time after installation and update, please RIGHT CLICK the DinoCapture icon and select "Run as Administrator" from the pop-up menu. Then confirm the operation by clicking "OK" on the Microsoft Vista pop-up screen.

This is a one time process after which your computer will recognize that the Run DinoCapture is authorized by the administrator. After this additional one-time procedure, you will then be able to double click on the DinoCapture at any time for future use.



Chapter 2 - Using File Functions

The file functions shall only be available after one or more picture or video in the scroll list have been selected. Most of the file functions can also be found in the pop-menu when right-clicking the desired images.

2.1 Open

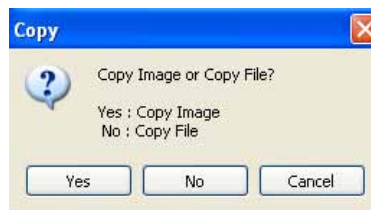
The "Open" tab under the "File" tab will open an all ready existing image in a separate box.

2.2 Save As

The "Save As" option first allows you to choose the resolution quality you would like to save the image with. After you have chosen the desired resolution, you can save it in whatever location you choose in your computer, or save it in a different format.

2.3 Copy

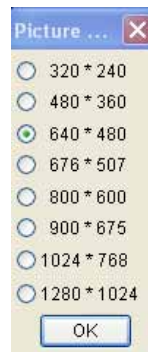
The copy option will give you two options when it opens: Copy Image or Copy File. If you choose to copy image, select "yes". This will copy the image to and hold it on the clipboard until you "paste" it in the desired destination. If you select the "Copy File" option, the image file will be copied until you paste it unto your desktop or another desired destination.



2.4 Share

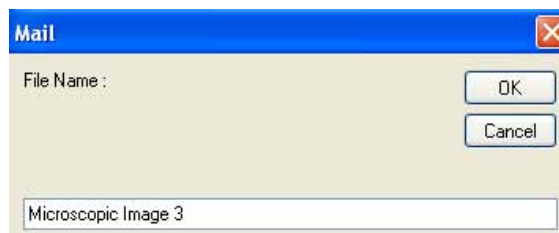
The Share function will copy the selected pictures to the Shared Documents > Shared Pictures > DinoShare, or copy the selected pictures to the Shared Documents > Shared Video > DinoShare so that the other computers on the same local network will be able to view the pictures or videos you share.

When you click on the "Share" tab, Dino Lite will allow you to choose the resolution of the image you would like to use when you share the image. The default is set to 640*480, but you may modify this by clicking on the bubble to the left of the desired resolution.



2.5 Mail

The "Mail" option will allow you to email the image to a third person. As with the "Share" option, you will also be prompted to choose the image quality you desire. After you have chosen the image quality you desire, you will be prompted to name the file. Lastly if your computer is not set up to send mail automatically, the Internet Connection Wizard in your computer will guide you through the steps to set up the feature.



2.6 Set Magnification

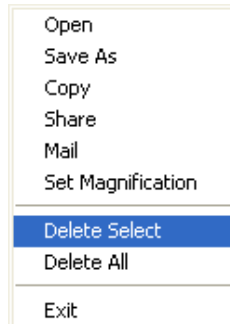
Once you have captured the image, enter a magnification value as it appears on the microscope's dial. This will allow you to take and record measurements such as length, angle, and the circumference of a circle. These measurements can be placed, seen and recorded directly on the image being studied.



NOTE: In order to take the measurements just mentioned, a magnification value for each image captured must be entered. See chapters six and seven of this manual for more information on setting magnification values.

2.7 Delete Select

This option allows you to delete the image or video you have selected from either the "Picture" or "Video" tab.



2.8 Delete All

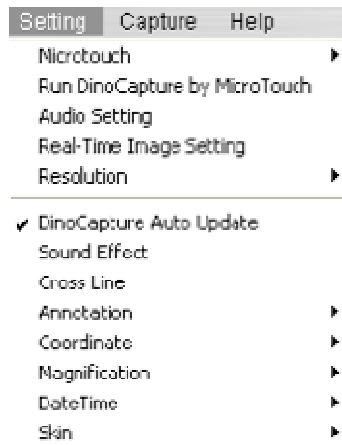
The "Delete All" option permits you to delete all of the images or videos shown on either the "Picture" or "Video" tab. Before deleting one or many images, you will see a prompt which will ask you to confirm that you want to delete either one image, a few selected images, or all images.

2.9 Exit

The "Exit" option will directly close Dino-Lite and exit you out of the program.

Chapter 3 - Dino-Lite Settings

Under the settings tab you will find the following options listed below:

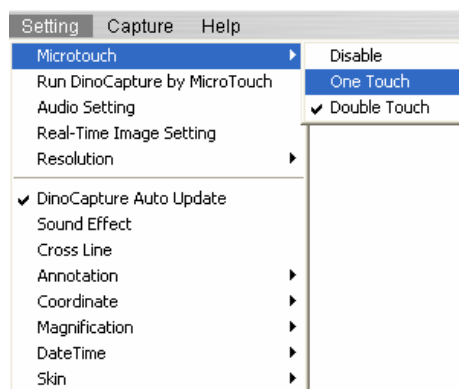


3.1 Microtouch

Disable: Allows you to enable or disable the Microtouch feature.

One Touch: Allows you to set the Microtouch feature so that it takes a picture of what you aim at with a single touch of your finger

Double Touch: Allows you to set the Microtouch feature to take a picture by touching it twice in about one second on the designated area. This feature is designed to avoid unwanted pictures being taken by an unintended touch.

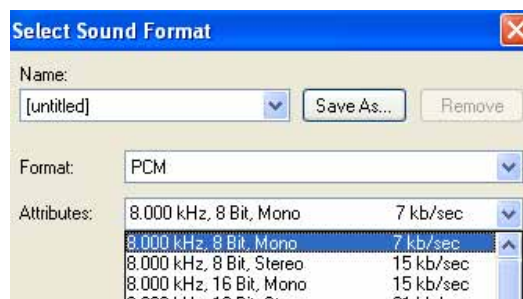


3.2 Run DinoCapture with Microtouch

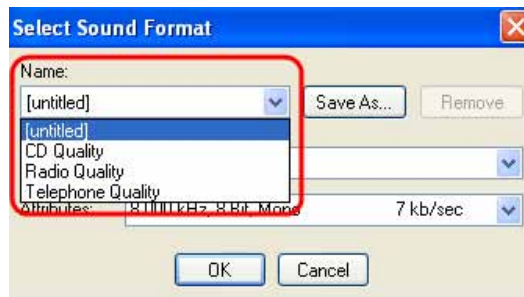
The “Run DinoCapture with Microtouch” tab allows you quickly start the DinoCapture program simply by pressing the Microtouch.

3.3 Audio Setting

The audio setting allows you to save the audio portion of the video you capture. When you click on the “Audio Settings” tab, you will be given the option to select the sound format you would like to save the sound in.



To save the sound in a specific format, go to the Attributes drop down menu and select the audio quality of your choice.



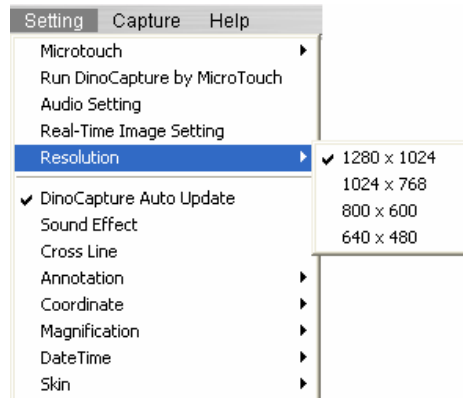
If you desire you may save the sound settings with a specific name by clicking on “Save As.” Once you have given that setting a name, it will appear on the pull down menu under “Name” as shown bellow.

3.4 Real -Time Image Setting

The “Real-Time Image Setting” allows the user to regulate and modify the brightness, color, saturation, etc. of the image you are viewing in real-time.

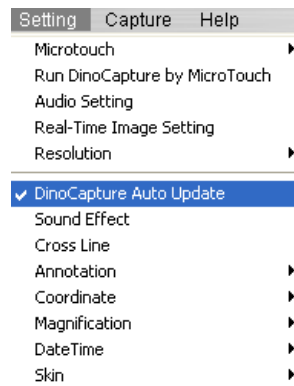
3.5 Resolution

By clicking on the Resolution tab, you will be given the option to choose the resolution quality you desire for your images.

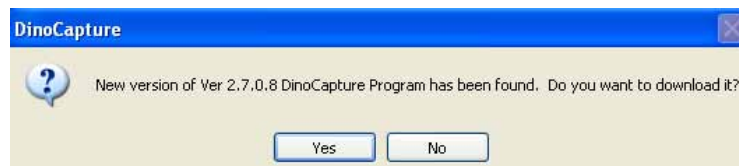


3.6 DinoCapture Auto Update

DinoCapture Auto Update allows you to update your Dino-Lite Microscope whenever there is an improvement in the software. When the DinoCapture Auto Update is enabled, the DinoCapture will automatically check if any updates are available on the Internet when the program starts.

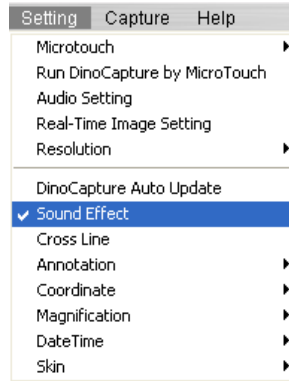


To check whether a new version of the Dino-Lite Digital Microscope is available, simply click on the DinoCapture Auto Update, or click on the DinoCapture Update under Help. A new window will open and inform you whether there are any updates or new versions of the software.



3.7 Sound Effect

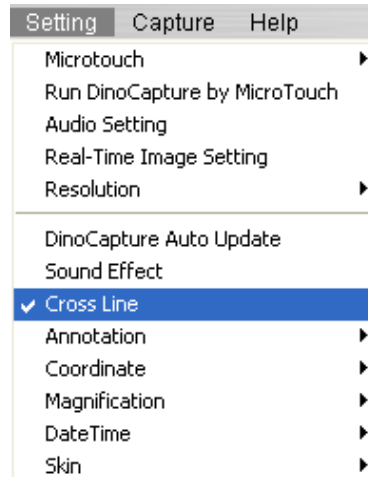
This will enable or disable the photographic camera shutter sound effect whenever you take a picture.



3.8 Cross Line

This function allows you to display a cross line on the preview screen which could be useful in some industrial applications.

To use the Cross Line function, click on the Cross Line tab. A window will open up allowing you to set the X/Y coordinates of the object you desire to measure.





3.9 Annotations

To show or hide an annotation made on an image, go to the “Annotation” tab and click on “Show.” This will allow you to see input and any annotations you make on the dialog box that opens at the top of the captured image.

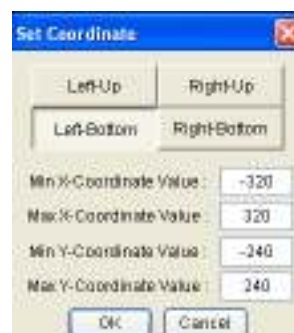
If you desire the annotation to be imprinted on the image, select “Imprint” before saving or emailing it.

3.10 Coordinates

This option allows the user to “Show” and to “Set” the coordinates.

As with the “Cross Line” function, the “Coordinate” function also allows you to set X/Y coordinates of the object being studied.

To set the coordinates, click on “Coordinate” then click on “Set”. This will bring you to a screen from which you can assign the X and Y coordinates their desired value.



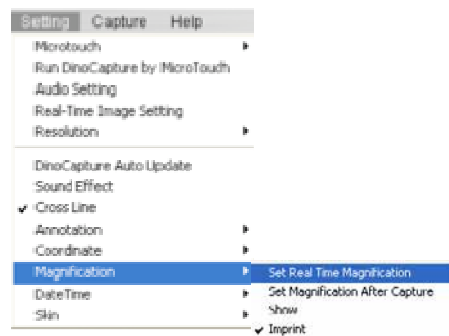
3.11 Magnification

Set Real Time Magnification

If the Dino-Lite is used in a way that the magnification rate will not be changed and the focus dial will not be adjusted, this function could help you enter the given magnification rate to each picture taken after this function is enabled.

When “Set Real Time Magnification” is selected, this function will open a text box on the top right of the DinoCapture screen where you can input the magnification rate.

To determine the magnification value of the image, refer to the reading on the center of the focus dial indicated by a small node. This constitutes the magnification value for the captured image.



Set Magnification After Capture

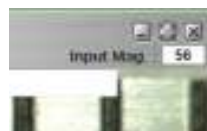
When activated, this option will bring up a box prompting you to enter the magnification every time after capturing each picture. This option could help you do measurements after taking multiple pictures.

Show

When activated, the “Show” option will show the magnification rate on the images captured.

Imprint

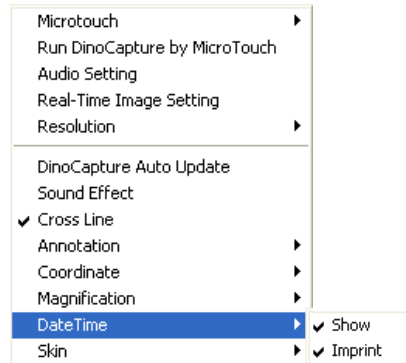
The imprint option will allow you to imprint the notes keyed into the dialog box that opens at the top of the screen.



3.12 Date & Time

The date and time function allows you to show the date and time when you took each picture. To show the date and time on the images you take, go to the Settings tab, then DateTime tab and select Show.

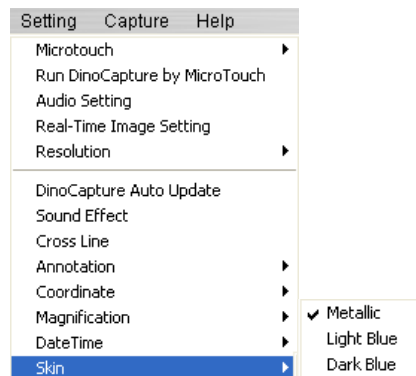
To show an imprint of the date and time on the pictures taken click on "Imprint." A check mark will appear on the left of the imprint tab indicating that the function has been activated.



3.13 Skin Setting

This function allows you to choose the Color Scheme for the display window. You can choose between three colors: Metallic, light blue, and dark blue.

To select the display setting of your choice, simply click on the color scheme you desire and it will automatically change to the selection of your choice.



Chapter 4 - Capturing Still Images

4.1 Taking Pictures

To take a picture of an image you can use any of the following methods:

- Go to the Capture Tab and click on "Picture"
- Click on the Camera icon



- Left-click on the Real-time preview screen
- Activate and use the Microtouch feature
- Press F11

Once you have taken a snapshot of the desired object, the picture will appear under the picture tab on the left of your screen. To open a picture double click on the selected image.





After you double click on the photo on the picture tab, the image will open on a separate window which will show a toolbar with options. For a quick look at what each tab is, drag your mouse over each icon.



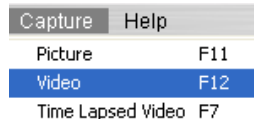
For information on how to use measurement and calibration functions contained in the icons above go to chapters six and seven.

NOTE: The following Dino-Lite Digital Microscope models contain the Measurement & Calibration Functions:

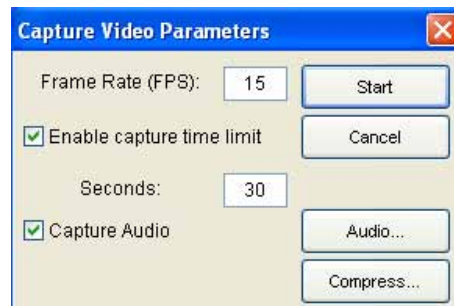
AM413T Series, among which, but not limited to, are the AM413ZT, AM413FVT, AM413FVT2, AM413FIT models.

Chapter 5 - Capturing Video

To capture video, go to the “Capture” tab on the main toolbar and select Video.

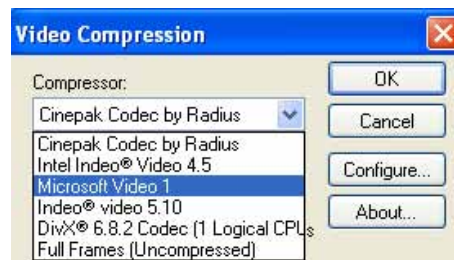


A window will open up allowing you to set the frames rates, set a video recording time limit, and enable or disable the audio.



Before you start capturing video, click on the Compress tab. The Video Compression window will give you a list of “Compressors” you can choose from.

To get most out of the video recording performance, you may opt to download or buy the codec from the codec providers. DivX (www.divx.com) is one of our recommendation.

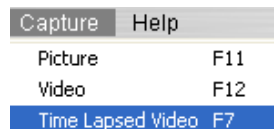


After you have selected a Video Compressor from the drop down menu, click OK. The Video Compression window will close. Then click Start on the Capture Video Parameters window to start capturing video.

5.2 Capturing Time Lapsed Video

The Dino Capture Digital Microscope has the unique function of allowing you to set Time Lapsed Video. This function can be used for capturing events such as the sprouting of a seed, the hatching of an egg, or the blossoming of a flower.

To capture a Time Lapsed Video, go to the "Capture" tab on the main toolbar on the main menu. Select the "Time Lapsed Video" option or click F7. A new window will open allowing you to set the date and time you desire the Dino-Lite Digital Microscope to start capturing video.



This window will open up allowing you to set the date, time, and total frames desired for the Time Lapsed Video Capture.



Each frame represents a snapshot taken of the object being observed. The "intervals" are how much time elapses between each snapshot.

The "Insert" tab allows you to insert additional frames to the ones already programmed between intervals.

Chapter 6 - Measurement Functions

6.1 Steps for Using Measurement Functions

Step 1: Bring image into focus by adjusting the dial on the side of the unit. Once in focus at the desired magnification, take a picture by clicking "Capture." The captured image will then be displayed in the picture scroll list located under the picture tab.



Step 2: To determine the magnification value of the image, refer to the reading on the center of the focus dial indicated by a small node. This is the magnification value for the captured image.



DinoCapture User's Manual

To enter this value, place your mouse over the captured image in the left-hand column, select "Set Magnification" and enter the magnification value. This set value will now be displayed in the upper right hand corner of the image, and will be used as a standard for measurement purposes.



Step 3: To utilize the measurement features simply double click on the desired image in the left hand column, and refer to the feature icons in the top row. Click on the "Measure" icon and choose from one of the selections below.



6.2 Angle Measurement

This function allows measurement of an angle. Simply click and drag to extend out to the desired angle.



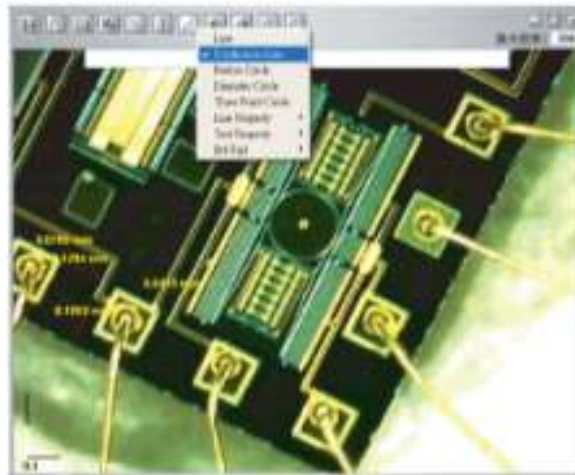
6.3 Line Measurement

The Line measurement allows you to measure from one point to the next. Simply click and drag to the desired length, and then click again to lock-in.



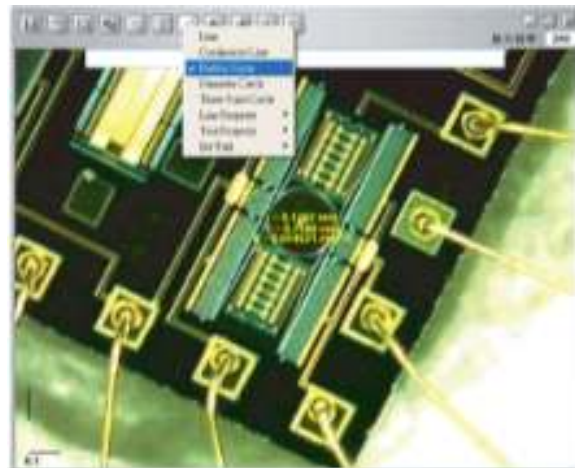
6.4 Continuous Line Measurement

The Continuous line function allows measurements of multiple connecting lines. Click and drag to connect desired points, and then click again to lock-in. Continue until all points have been connected.



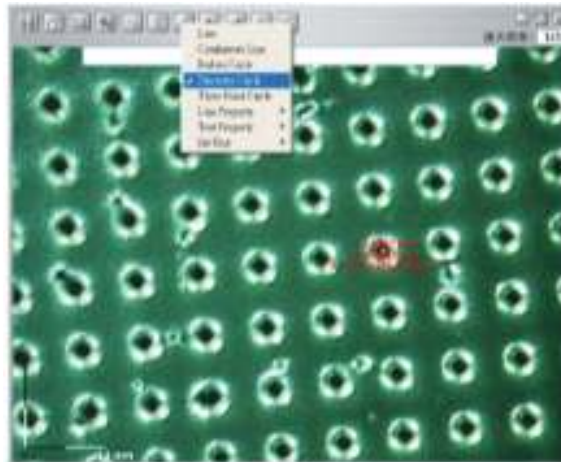
6.5 Radius Circle Measurement

Radius Circle allows you to measure the radius, circumference and area of a circle. Simply click and extend out to the desired radius.



6.6 Diameter Circle Measurement

This function allows measurement of the diameter, circumference and area of a circle. Simply click and extend out to the desired diameter.



6.7 Three Point Circle Measurement

The Three Point Circle allows measurement of the radius, circumference and area of a circle by simply defining any three points and clicking.



Chapter 7 - DinoCapture Calibration

7.1 How to Use the Calibration Fun

Step 1: Select a known measurement standard, such as a ruler, to be used for calibration. Take a picture of the selected measurement standard.



Step 2: Now open the picture of the measurement calibration standard.



Step 3: Determine the magnification value from the reading on the DinoLite adjustment dial. Enter this value in the "Input Mag" box located in the upper right hand corner of the screen.



Step 4: Now click on the measurement icon at the top of the page and select "Calibration."



Step 5: The software will then prompt you to take a measurement on the selected calibration standard.



Step 6: Take a sample measurement of the selected calibration standard by clicking on beginning and ending points across a known measurement value (such as 5 mm, .5 in., etc.). A measurement value before calibration will be displayed (5.179 mm in the example below).



Step 7: Enter the exact known value of the measurement sample (5.0 mm in this example) in the "Adjusted Mag" window. Click "OK."



Step 8: The software will automatically calibrate the magnification rate and will show the adjusted magnification rate in the upper right corner of the picture.



Step 9: Now the software is ready to take calibrated measurements with adjusted magnification rates. To verify calibration simply take another measurement sample of a known measurement value.



Notes:

1. Calibration can be done at both lower magnification rates (<80x) and higher magnification rates (>80x) respectively. However, it will be more accurate if the calibration is done at the magnification rate closest to the one used for measurement.
2. The calibration can be cleared by selecting "Clear All Calibration."

3. The measurement can also be ignored without clearing the calibration by disabling the "Measure with Adjusted Mag. Rate." The Adjusted Mag. will not be shown in the picture if the calibration is disabled.

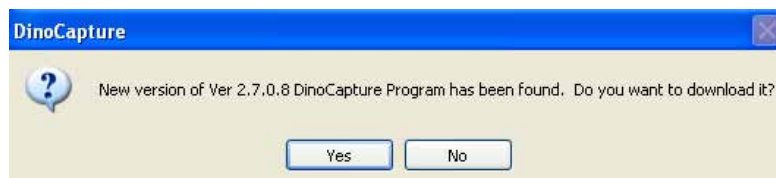
4. The following Dino-Lite Digital Microscope models contain the Measurement & Calibration Functions:

AM413T Series, among which, but not limited to, are the AM413ZT, AM413FVT, AM413FVT2, AM413FIT models

Chapter 8 - Help Options

8.1 DinoCapture Update

The DinoCapture Update option will allow you to check for new software updates which may be available for download. To check if there are any new updates for your Dino-Lite Digital Microscope, go to the "Help" tab and click on "DinoCapture Update." If there is an available update available for download a window will open informing you of the new version currently available and will ask you if you would like to download it. To download click on "Yes."



8.2 About DinoCapture

When selected, the "About DinoCapture" tab on help will tell you what DinoCapture Digital Microscope version you are currently running.

